

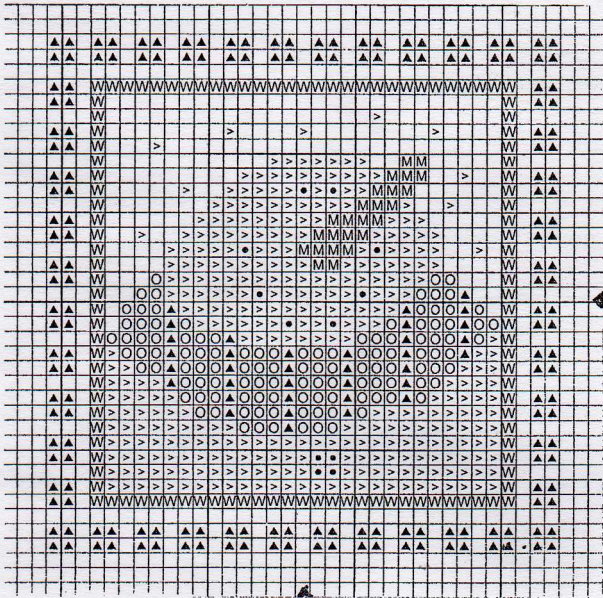
# Another Snowman Ornament

Stitch Count: 36H x 35W

Approximate Design Size: 2 1/2 x 2 1/2

Model is stitched over two threads on 28 ct. New Khaki Lugana, (available from Norden Crafts, LTD.). Use two strands of floss. When using over dyed floss, complete each cross-stitch individually.

Symbol	Crescent Colours	DMC	Anchor
M	Candied Yams	722	323
>	Snowball	Blanc	2
▲	Chili Pepper	3777	1015
W	Bejeweled	3847	1076
O	Meadow Green	563	208
•	Nighty Nite	823	152



Visit me at my Web Site: <http://members.papadocs/valsstuff/>  
**Handout design courtesy of Val's Stuff.**

This design may be reproduced for use as a handout or for classes.  
 © 2008 VAL'S STUFF