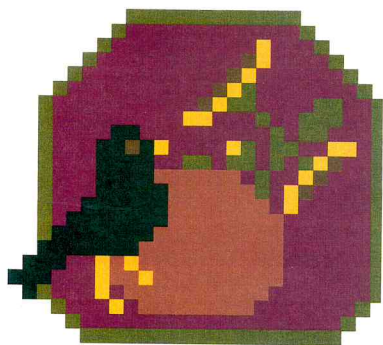
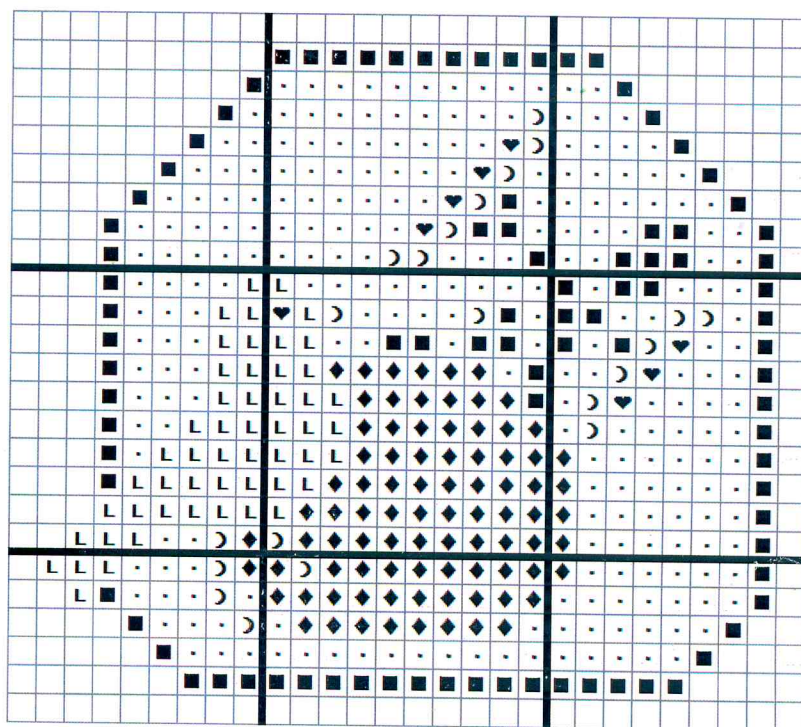


Blackbird Scissor Fob



Free chart Not to be sold.



The scissor fob is very easy to assemble. We used dental floss to string (very strong). Fold string in half (like you would for sewing a button) then take the clasp and do a slip stitch to attach the floss to the clasp. Add crimp bead & squish it. Next, string the beads in your desired order using a beading needle, adding the stitched fob in the center and ending with the largest bead followed by a small bead, crimp bead & small bead. Run the floss back up and then thru the small bead, crimp bead, small bead, thru the large bead and back into the fob to hide the end. Smash the crimp bead to secure.

Fabric: 32 ct Cream linen
Design size: 26w X 23h Stitches

Floss:

Symbol	DMC	Color
■	745	Sunflower
♥	300	Brown
◆	920	Burnt orange
■	730	Olive-dk
■	310	Black
■	815	Garnet

Praiseworthy Stitches

Email: praiseworthystch@bellsouth.net

www.praiseworthystitches.com

www.praiseworthystitches.blogspot.com

