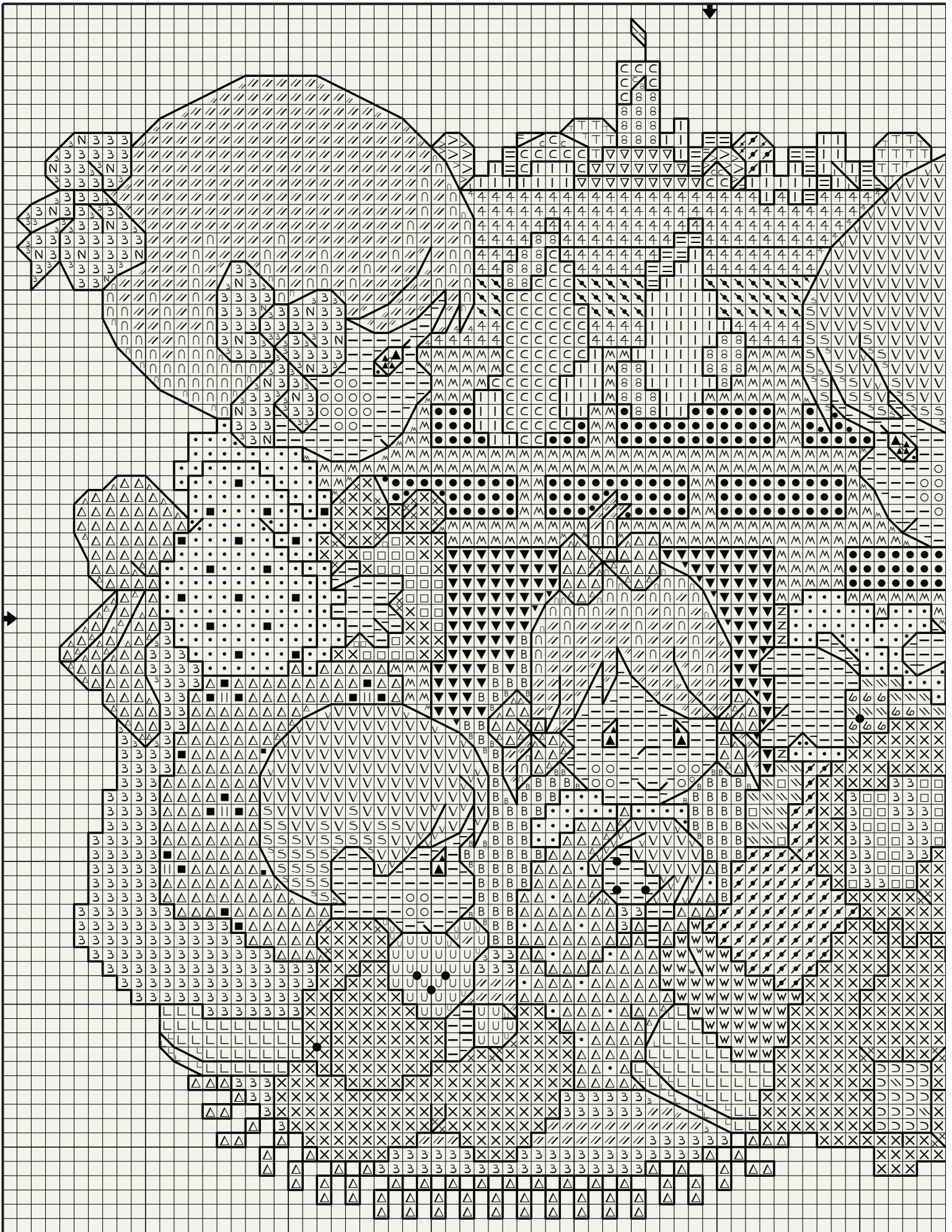
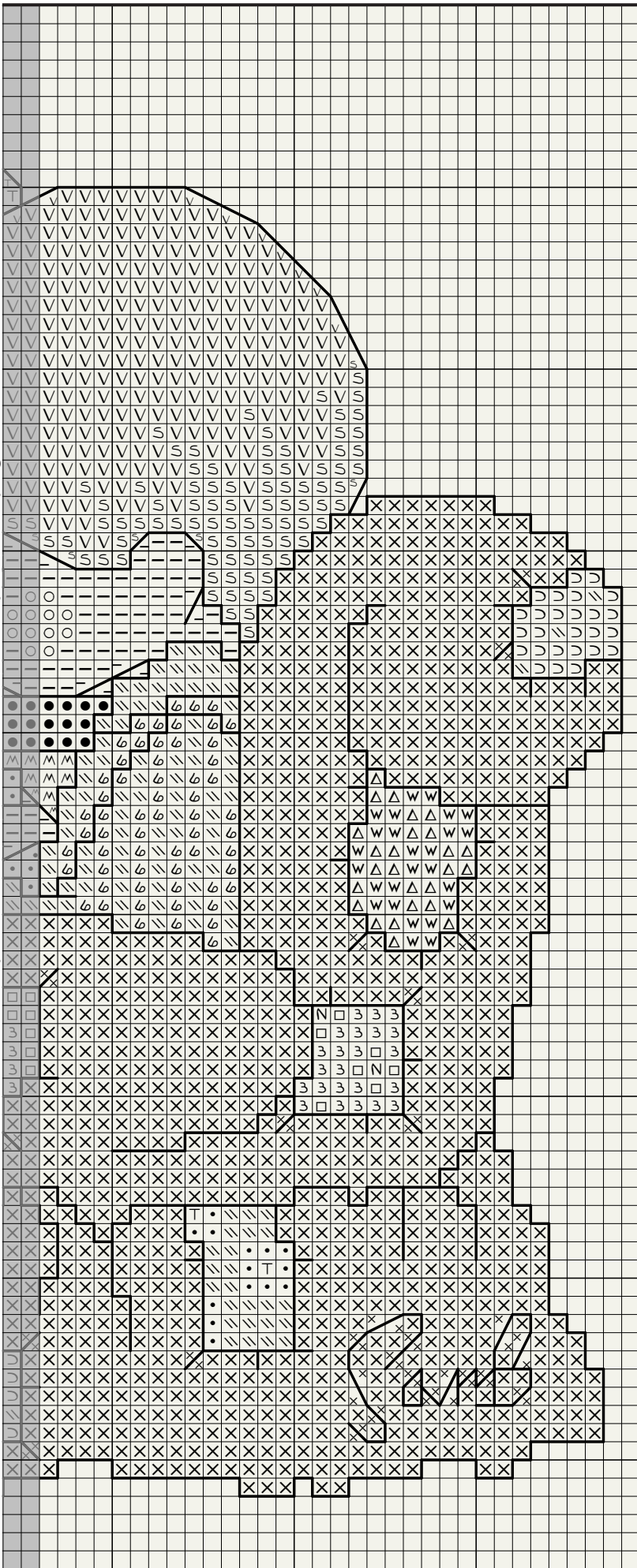


Precious family



Precious family

Shaded Area represents last 2 rows stitches on previous page.



- | DMC | Color |
|--------|---------------------------|
| 223 | Shell Pink-Lt. |
| N 224 | Shell Pink-Vy. Lt. |
| △ 225 | Shell Pink-Ultra Vy. Lt. |
| T 316 | Antique Mauve-Med. |
| = 367 | Pistachio Green-Dk. |
| I 368 | Pistachio Green-Lt. |
| ● 407 | Desert Sand-Dk. |
| Z 415 | Pearl Gray |
| ↘ 436 | Tan |
| 4 437 | Tan-Lt. |
| ■ 503 | Blue Green-Med. |
| V 543 | Beige Brown-Ultra Vy. Lt. |
| ▼ 646 | Beaver Gray-Dk. |
| ▽ 676 | Old Gold-Lt. |
| // 712 | Cream |
| U 738 | Tan-Vy. Lt. |
| n 739 | Tan-Ultra Vy. Lt. |
| B 743 | Yellow-Med. |
| > 744 | Yellow-Pale |
| □ 745 | Yellow-Lt. Pale |
| 6 746 | Off White |
| O 754 | Peach-Lt. |
| C 760 | Salmon |
| ∩ 762 | Pearl Gray-Vy. Lt. |
| X 775 | Baby Blue-Vy. Lt. |
| ∖ 778 | Antique Mauve-Vy. Lt. |
| S 842 | Beige Brown-Vy. Lt. |
| ▲ 930 | Antique Blue-Dk. |
| ↙ 932 | Antique Blue-Lt. |
| - 948 | Peach-Vy. Lt. |
| M 950 | Desert Sand-Lt. |
| L 3033 | Mocha Brown-Vy. Lt. |
| 8 3328 | Salmon-Dk. |
| w 3752 | Antique Blue-Vy. Lt. |
| 3 3813 | Blue Green-Lt. |
| • | White |

Backstitch

- | | |
|------|------------------|
| 3862 | Mocha Beige-Dk. |
| 3863 | Mocha Beige-Med. |

Add a little white stitch to eyes where indicated ○○.

Backstitch in order given:

Backstitch eyes, mouths and nose in 3862.
All other backstitch in 3863.

French Knots:

Buttons on cuff and pajamas – Make French Knots (●) in 3863. (One strand, wrap once.)
Doll's and Bear's eyes and mouth – Make French Knots (●) in 3862. (One strand, wrap once.)

14 ct. Antique White Aida = 13"w x 12"h

Finished Size = 6-7/8"w x 6"h

Cross Stitch- 2 strands

Backstitch- 1 strand