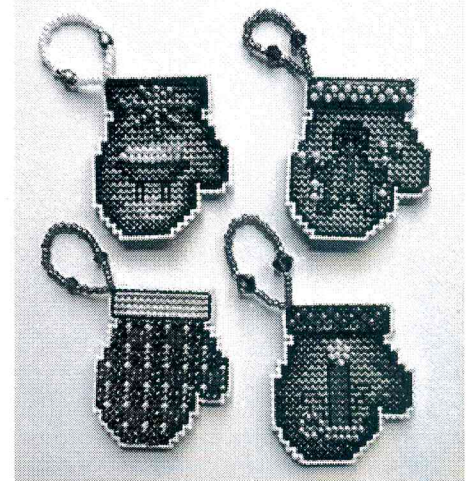
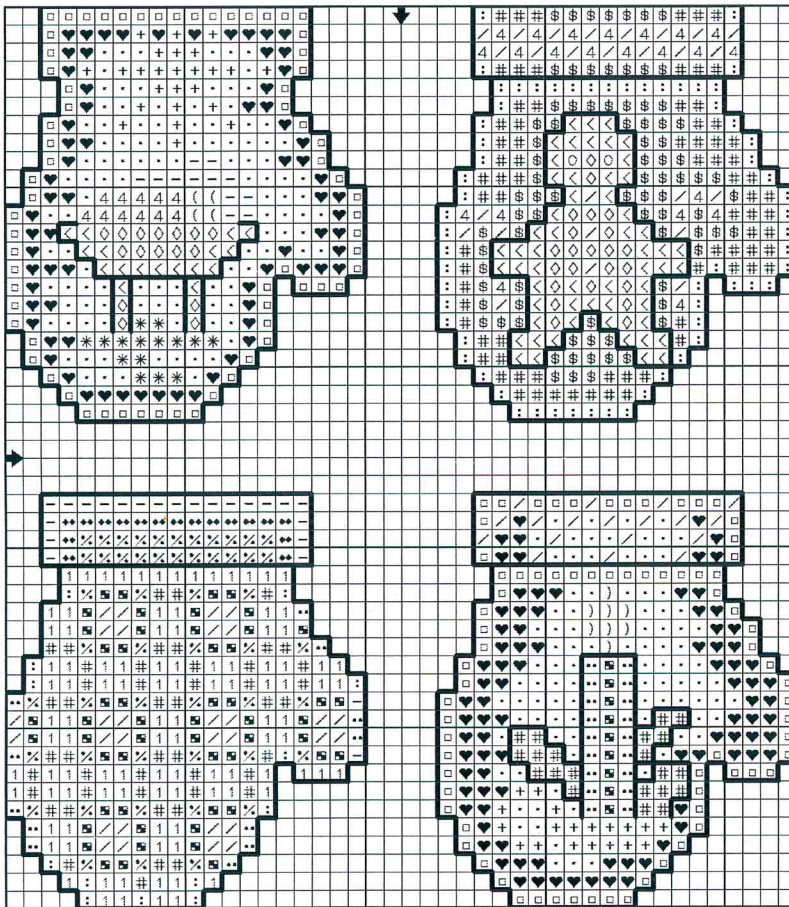


# FREE GRAPH

## Mittens

compliments of Frony Ritter Designs



**mitten size:** 1 3/4" h x 1 1/2" w  
**chart size:** 3.14" w x 5.57" h

Mill Hill 14 count perforated paper - PP1 white  
(or your color choice)

Attach Mill Hill beads with a *half cross stitch* using a size 10 beading needle with floss color similar to bead color.

**finishing:** Cut out each mitten one square away from the stitching using a small sharp pointed scissors. Make hangers using *Mill Hill beads* and *4 mm Mill Hill crystal rondle treasures*. Cover back with white felt, using acid free tacky glue.

### DMC Floss Cross Stitches

Symbol	Strands	Number	Color
••	2	321	Christmas Red
<	2	433	Brown-MD
◇	2	435	Brown-VY LT
■	2	666	Christmas Red-BRT
*	2	676	Green Old Gold-LT
:	2	699	Christmas Green
#	2	701	Christmas -LT
\$	2	702	Kelly Green
♥	2	792	Cornflower Blue-DK
□	2	796	Royal Blue-DK
.	2	799	Delft Blue-MD
◆	2	928	Gray Green-VY LT
-	2	3747	Blue Violet-VY LT
⊘	2	BLANC	WHITE

### DMC Floss Back Stitches

Symbol	Strands	Number	Color
—	1	310	Black

### Mill Hill Beads with Half Cross Stitches

Symbol	Strands	Number	Color	
)	2	00128	Yellow	
/	2	00165	Christmas Red	
□	4	2	00479	White
+	2	00557	Old Gold	
0	2	02014	Black	
1	2	02054	Brilliant Shamrock	
(	2	62036	Frosted Pink Coral	

### Suggested rondle treasures

13071 light siam (red); 13026 emerald; 13027 aurum gold