

To Bead or Not to Bead

© Lois Caron 2014

this free pattern is for the use of our website visitors only. Please do not duplicate without permission

MATERIALS

Fabric or Canvas: 18 count canvas or evenweave fabric

Tapestry needles: #22

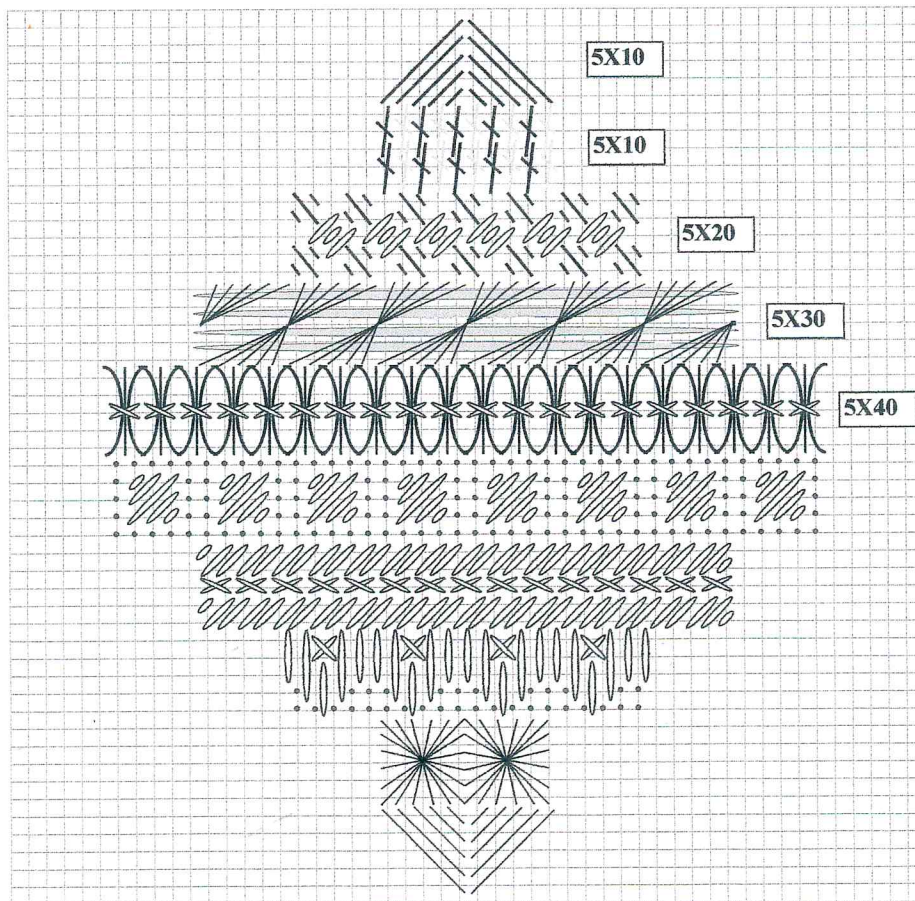
Threads: This design can be stitched with as little as two colors of Waterlilies. If they both have a lot of variegations in the skein, you can achieve the look of many colors. You will not need more than two yards of each color. If you elect to use more colors, you will only need one yard of each.

A background stitch of your choice is optional, especially if your base is an evenweave fabric.

In the model, we have used all Waterlilies and have worked with six colors : 144 Pomegranate, 173 Redwood, 211 Cucumber, 236 Appalachia, 276 Tequila Sunrise, 277 Hot Peppers, plus 3 yards of 118, Opal for the background, which is done in vertical rows of Satin Stitch over 5 threads.

For Waterlilies, use 4 of the 12 plies in the strand (additional for upright stitches). For Watercolours use one ply of the 3 in the strand.

For a color image of the design, complete stitch diagrams, and a list of suitable Caron collection threads for different fabric/canvas sizes, see our website: www.caron-net.com



**Design Size: 50 x 50 threads (including background)
= 2.75" square on 18 count**